

PALLIATIVE CARE

St. Joseph's Palliative Care
Team



St. Joseph's Hospital – Tampa Implementation

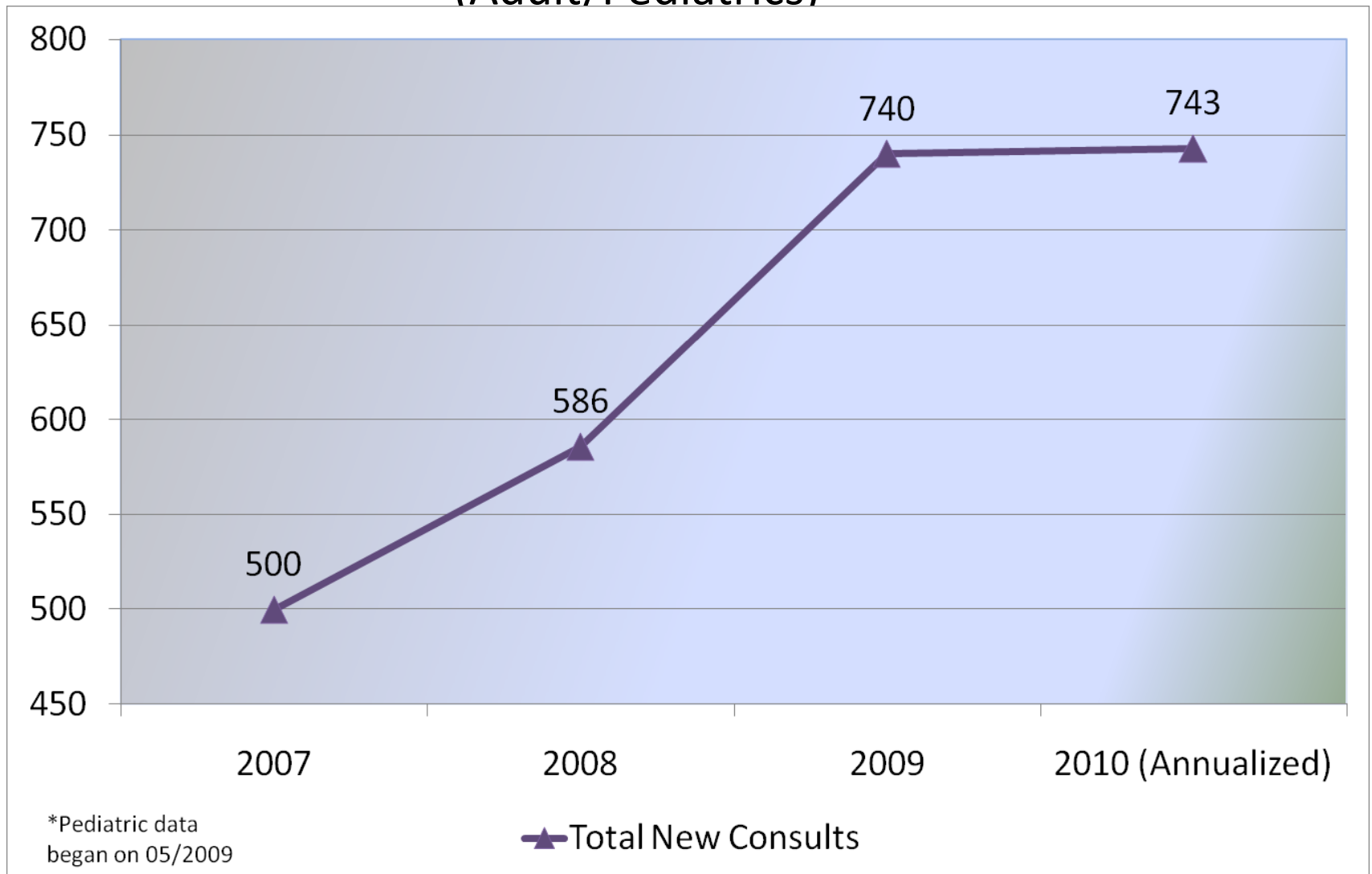
- Task Force with workgroups
- Needs Assessment
- ALL INCLUSIVE educational effort
- Data collection
- Creation of Oversight Committee
- All part-time team members
- Complex, Long LOS cases
- Approx 6 consults/week

St. Joseph's Hospital – Tampa

Current State

- Since November 2006
- Collaborative Model
- 4 person Interdisciplinary Team
- Adults and Pediatrics
- 24/7
- ICUs and Hospitalists
- Goals of Care, symptom control
- 15 new consults/week

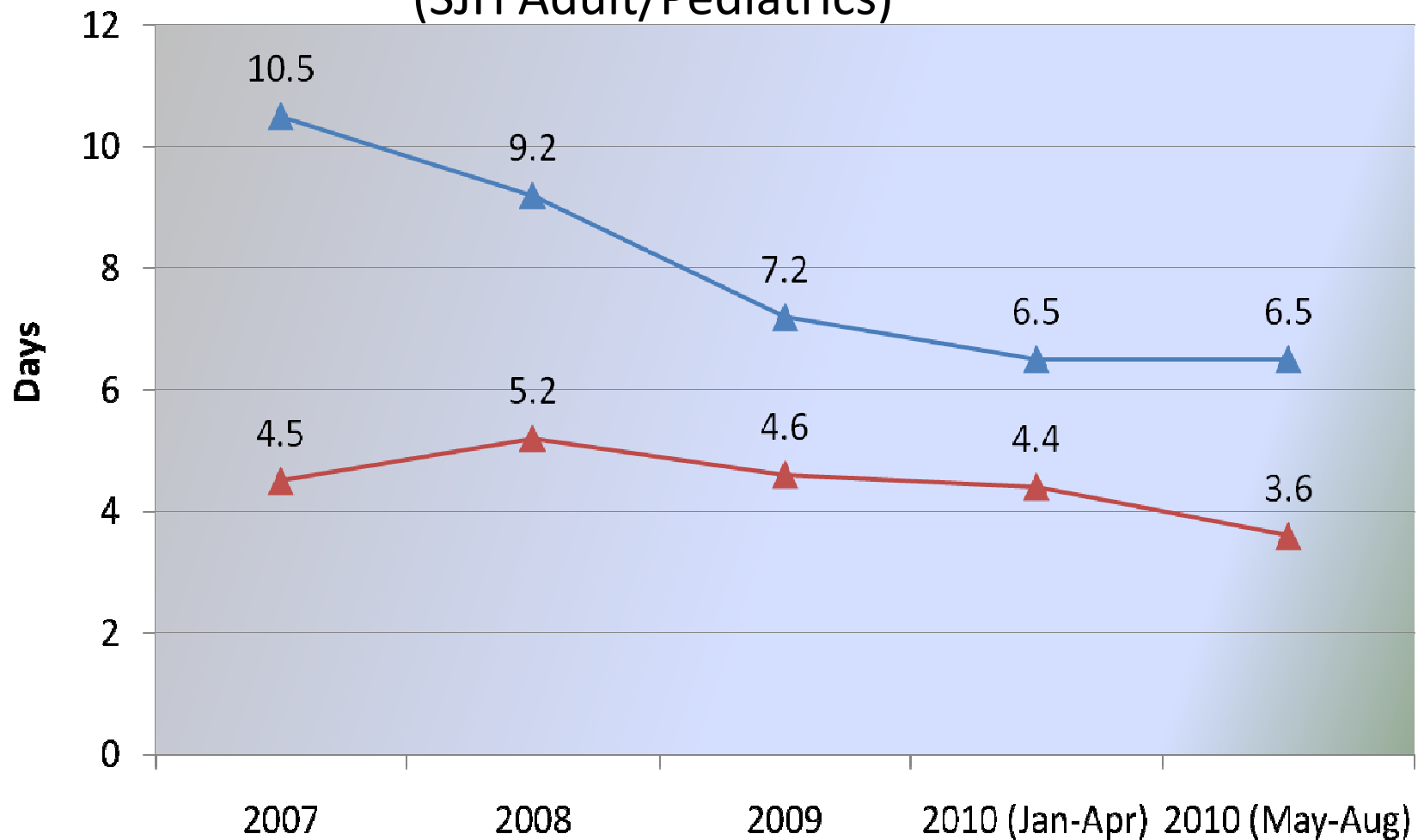
St. Joseph Hospital – Tampa Palliative Care Consults by Year (Adult/Pediatrics)



St. Joseph's Hospital – Tampa

Hospital Days Prior to & After Consult

(SJH Adult/Pediatrics)*



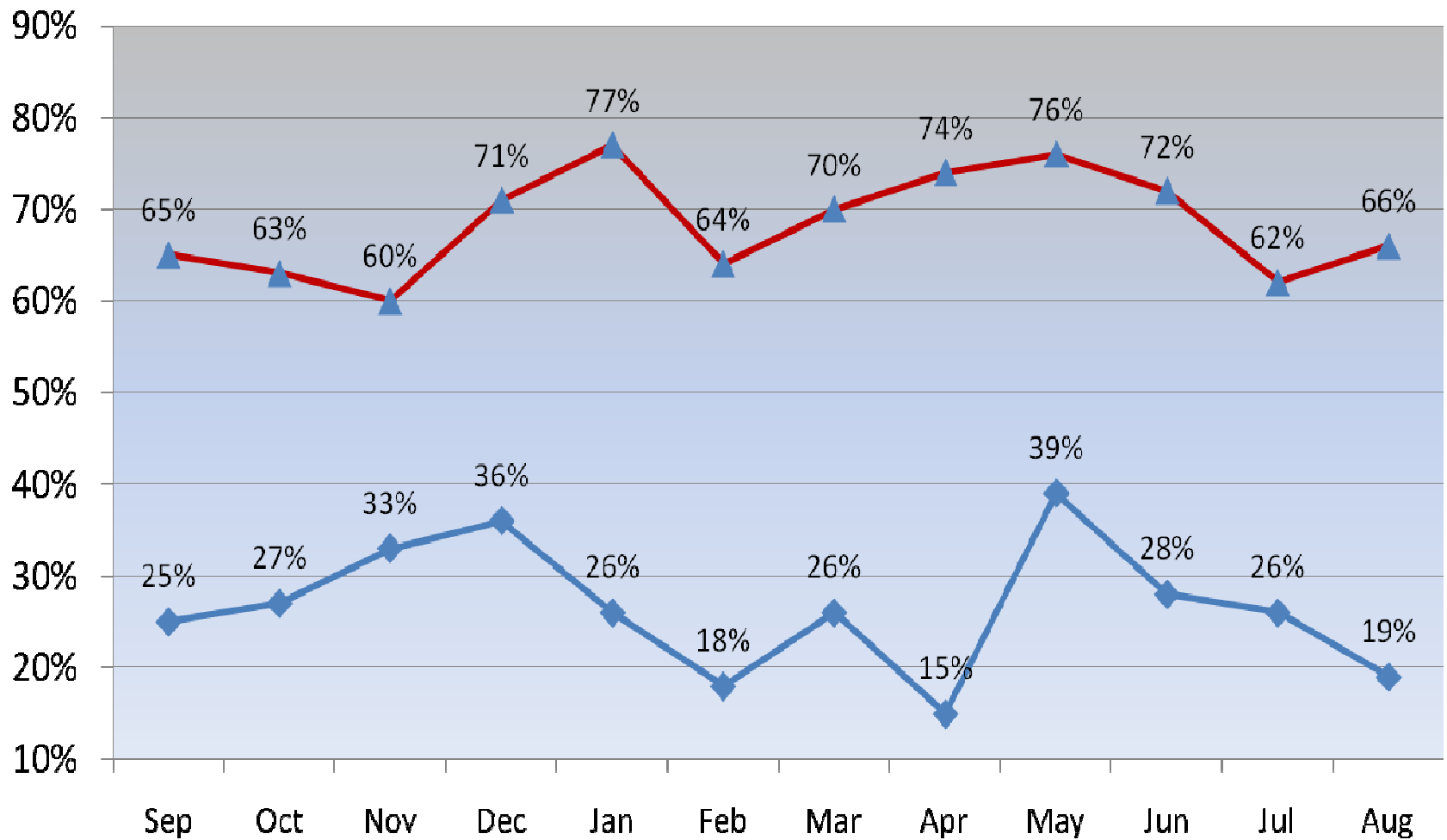
*Pediatric data
began on 01/01/10

▲ Hospital Days Prior to Consult

▲ Hospital Days After Consult

St. Joseph's Hospital – Tampa

% of Patients With Signed DNR Before & After Consult (SJH Adult/Pediatrics)



*Pediatric data began
or 01/01/10

◆ % (Y) DNR Prior to Consult

▲ % (Y) DNR After Consult